

Cylon SiteGuideV2.2

The Cylon SiteGuideV2.2 is an easy to program, easy to use touchscreen menu based user interface device that allows basic supervision of a Cylon UnitronUC32 BMS site.



Intuitive 7" Colour Touchscreen

Flexible Menu structure ensures site navigation is made easy.
The 7" colour screen has easy-click buttons which make the SiteGuide easy-to-use.
Graphical Datalog display allows for easy interaction and greatly reduces the user's learning curve.

Provides for Functional Overview of site including

Text Menus – virtually eliminates errors as users select from clearly defined menus.
Password protected – menu options can be password protected.
Setpoints – control of setpoints is facilitated at the touch of a button.
Alarms – users can respond quickly to alarms, which are highlighted through graphics and audio.
Schedules – step by step fail safe sequences to guide the user.
Datalogs – increased operator accuracy reduces engineering time.

Mounting

The Cylon SiteGuideV2.2 is durable enough for industrial use, yet stylish enough to be mounted on display in a typical office environment.
Wall/Panel mounting bracket comes as standard with the device.

Low Engineering Costs

The Cylon SiteGuideV2.2 is configured using the UEC Keypad Interface Builder application, and uses the latest touchscreen technologies, so that with limited training all types of users can become experts. Users intuitively understand how to use the Cylon SiteGuideV2.2 interface, reducing training time and costs.

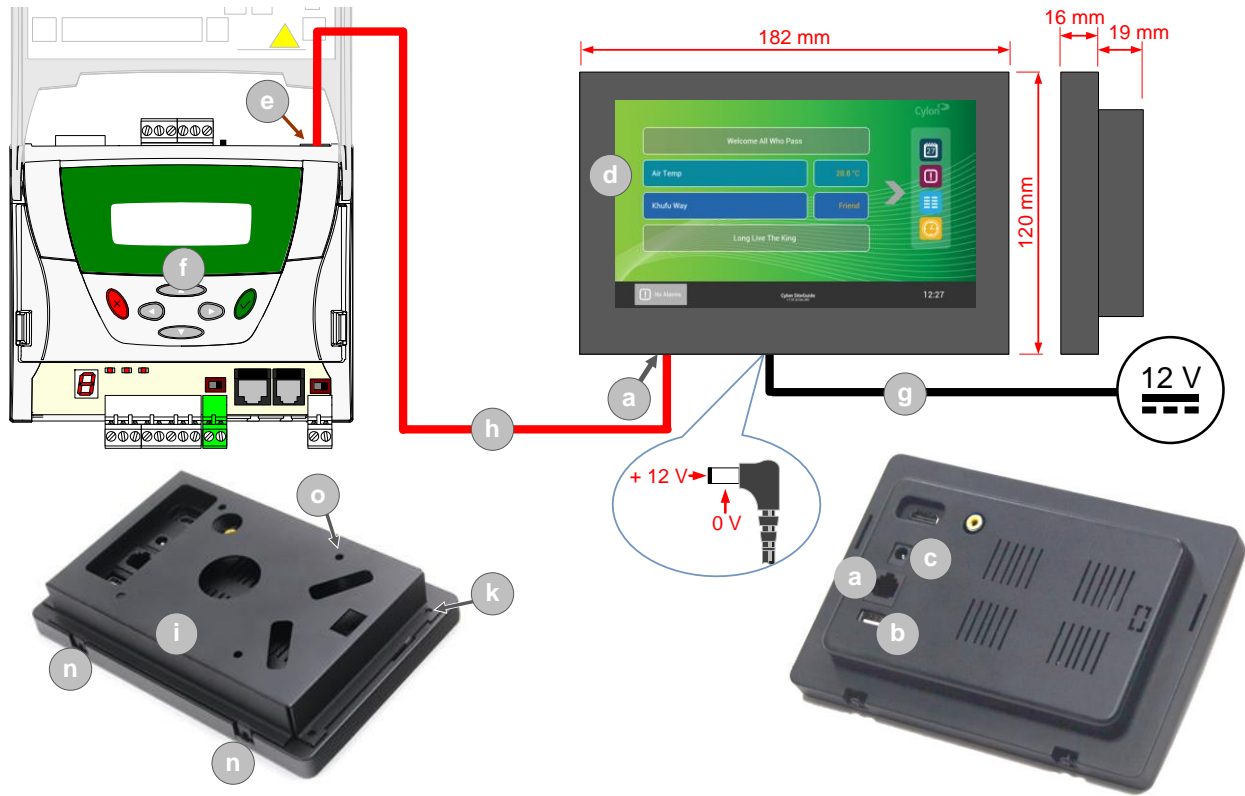
Reliable Hardware

Slim – the 7" screen with clutter-free layout means that all data is clear to the user.
Fanless – Cylon SiteGuideV2.2 removes the need for a fan which ultimately reduces maintenance costs.
Rugged – can withstand industrial environments.

Connects to UC32.netK via 10/100 Base Tx Ethernet



Schematic



Warning: Any attempt to open the unit by unauthorised personnel will invalidate the manufacturer's warranty.

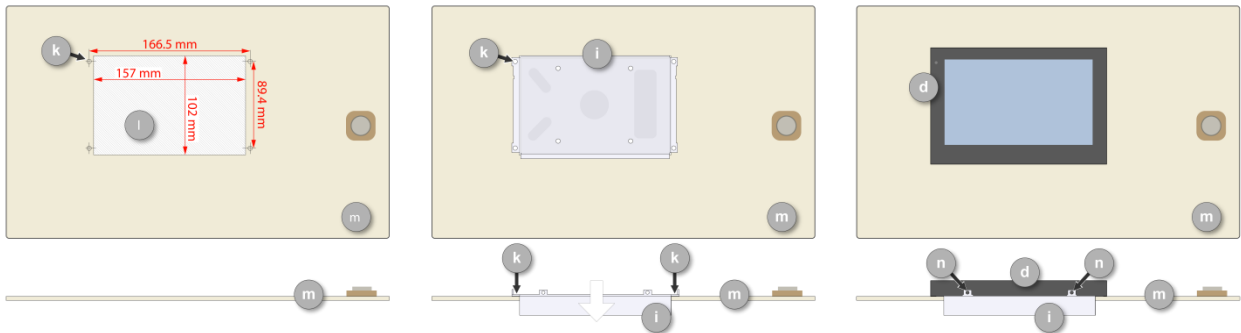
- a** LAN (Ethernet) Port
- b** USB socket
- c** Power input (12 V dc) Power adapter (supplied) 12 V dc 1.5 A
- d** **SiteGuide**
- e** Ethernet port
- f** **UC32.netK** Comms Controller
- g** Power cable (supplied).
Note: The wire marked with grey dashes must be connected to - 0 V.
- h** LAN (Ethernet)
- i** Mounting plate
- k** 4 x holes for No. 4 self-tap screws
- l** Hole to be cut out
- m** Panel door
- n** Holes for screws to attach **SiteGuide** v 2.2 unit to mounting bracket
- o** Holes for M4 screws

Mounting procedure – Flush mounting:

Cut a rectangular hole **l** 157 mm wide long by 102 mm high hole in the panel / cabinet door **m**.

Place the Mounting plate **i** in position from the outside of the panel / cabinet door **m**, and drill 4 x 2.3 mm holes **k**. Secure the plate **i** with 4 x No. 4 self-tap screws.

Secure the **SiteGuide** v2.2 unit **d** to the mounting plate **i** at points **n** using the screws provided.

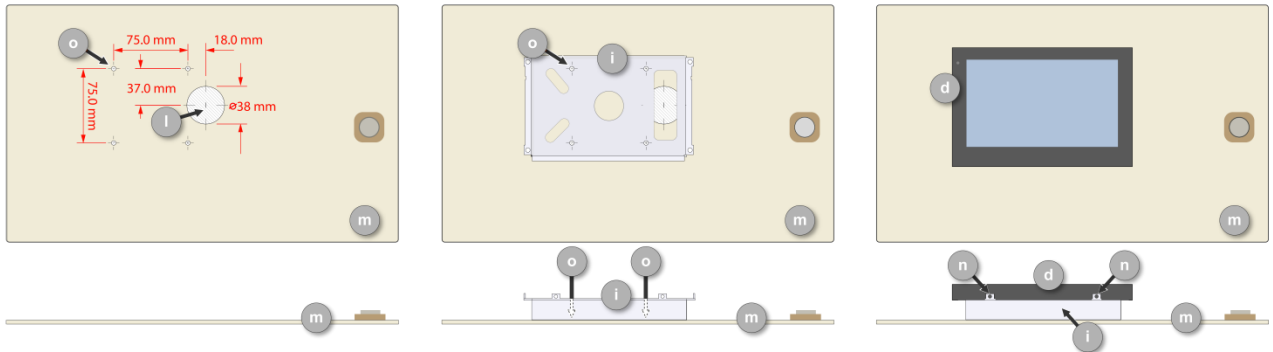


Mounting procedure – VESA mounting:

Cut a 30 mm diameter hole **l** through the panel door **m** to pass cables through, and drill 4 clearance holes **o** for M4 screws.

Remove the mounting plate **i** from the **SiteGuide** v2.2 and align it with the holes on the panel door. Secure it in place with 4 screws in holes **o**.

Pass power and network cables through the pass-through hole **l**, and plug them into the sockets on the back of the **SiteGuide** v2.2 unit. Place the unit into the mounting bracket **i**, and secure it at points **n** using the screws provided.



Initial Configuration

Swipe from the left-hand side of the screen, and enter the configuration PIN. The factory default value for this PIN is 29566285 ("CYLONCTL").

Select **Settings** from the side menu

- Select **Content Settings** > **Address** to specify the IP Address of the target **UC32.netK** controller.
- Select **Device Settings** > **Android Settings** to configure the **SiteGuide** device's Ethernet settings.

It is recommended the default PIN should be changed by selecting **Device Settings** > **PIN**.

The default IP address of the SiteGuide device is 192.168.1.2. This can be changed if required by selecting **Device Settings** > **Android Settings** > **More...** > **Ethernet** > **Advanced Configure**

SPECIFICATIONS

SYSTEM

Processor	Allwinner's A83T processor, Octa-Core Cortex™-A7 CPU 1.2GHz
RAM	2GB
Nand flash	8GB
Ethernet	RJ-45 connector x1 (WiFi not supported at this time)
I/O Port	USB x 1
Audio	2 x 1 W integrated speakers
OS	Android 4.4.4

MECHANICAL

Colour	Black
Mounting	Integrated Bracket For Wall/Panel Mounting
Dimensions	182mm x 121 mm x 25 mm (35 mm including bracket, 16 mm from panel)

ENVIRONMENTAL

Operating Temperature	0 °C ... 50 °C
Storage Temperature	-10 °C ... 50 °C
Operating Humidity	20% - 80%

POWER SUPPLY

Voltage input	DC 12 V
Power Consumption	5-7 W

LCD

Display Type	7 Inch IPS Display
Max. Resolution	1024 x 600
Aspect ratio	16:9
Brightness (cd/m ²)	350 cd/m ²
Contrast ratio	600:1
Type	Touchscreen

CONFIGURATION

Software	Keypad Interface Builder (Cylon Engineering Center v6.75b68 or later)
Compatible controller	UC32.netK version 2.03.01 or later Note: Cylon SiteGuideV2.2 is not compatible with UC32.netK/P Note: Cylon SiteGuideV2.2 is not compatible with Comms Controllers based on older hardware. If the Comms Controller serial number begins with CNET, HNET or ANET, SiteGuide will not be able to communicate with it.

Note: When the unit is first powered up its wired Ethernet interface is assigned a default static IP address of 192.168.1.2. This can be changed if required from the PIN-protected configuration application, accessed by swiping from the left of the screen.

You must also set the "Target Address" to the IP address of the Comms Controller containing the appropriate Keypad program – see MAN0119 for details.

LANGUAGE SUPPORT

Languages used in standard interface English, German